



**WORLD'S BEST
ALLOY BULLBARS**

**Lighter
Stronger
Better!**

**Strongest Built
Australian Made
Lifetime Warranty**

PN: P2FU0046TSY



**Fitting Guide &
Owners Manual
FUSO FM/FN FIGHTER
2020 ON**

2 POST BAR
VEHICLE FRONTAL PROTECTION SYSTEM (VFPS)
FOR AIR BAG & ADR COMPLIANT VEHICLES



**SUPERCARS
OFFICIAL BULLBAR
OF SUPERCARS**

Index

Pages 3-5

ECB's Benefits
Product Care

Pages 6-7

Stage 1 - Vehicle Testing and Preparation
Stage 2 - Bumper Removal
Stage 3 - Headlight support bracket
Stage 4 - Remove headlight
Stage 5 - Lower headlight bracket
Stage 6 - Tow Hook

Pages 8-9

Stage 7 - Steel mount fitment
Stage 8 - Support brackets
Stage 9 - Headlight fitment
Stage 10 - Wiring electrics
Stage 11 to 12 - Install Protection Bar

Pages 10-11

Stage 13 - Connect lights/indicators/park lights
Stage 14 - Tow Pins
Stage 15 -Tilt sticker
Stage 16 - Test and checks
Final checks

Pages 12-13

Installation Kit

Pages 14-15

Finished Product
Warranty Registration

ECB's Benefits

Built to Perform - Not to a Price

ECB are proud to claim that their channels are not jigsaw puzzles that are bolted together, or even multiple sections welded together. Where any welding is required, it is done to the highest standards by qualified welders, not machines.

Anti-Corrosive Nature of Alloy

The composition of ECB's alloy has a very high resistance to corrosion. Rust not only looks unappealing but greatly reduces the strength of the metal. Rust can and will weaken the structural integrity of a steel bullbar effectively rendering it useless over time.

Australian Made

Established in 1971, we utilise over 46 years of experience designing, engineering and building products in Australia to suit Australian conditions. We can ensure the best quality controls and help support the local economy and employ over 90 proud Australians.

Weight Saving Benefits

An ECB alloy bullbar is typically half the weight of a steel bullbar. Unnecessary suspension upgrades are not required. The reduced weight also contributes to increased fuel economy and less wear and tear on tyres, suspension and braking components.

Welds That Work

ECB uses only the strongest welds and welding techniques to ensure every product is as structurally sound as possible. MIG (Metal Inert Gas) welding techniques are employed ensuring the welds are as thick as the thickest section of alloy's being joined together.

Lifetime Warranty

ECB provide a lifetime warranty and consumer guarantee on all of our manufactured products. This guarantee highlights the confidence in our ability and provides complete peace of mind for your purchase for the lifetime you own your vehicle.

Product Care

Polished Products

Being a premium mirror polished finish, regular maintenance will be required to keep that iconic ECB shine. We recommend using our own brand of Aluminium Polish. This formula has been tried and tested and in our opinion is the world's best standard.

Directions: Apply a small quantity of Aluminium Polish to a clean soft cloth and rub the metal surface. The longer the rubbing the brighter the surface becomes. Wipe off Aluminium Polish with clean soft cloth. Also suitable for motorised buffing machines.

Note: There are more specific details on the polish bottle. Please read before use.

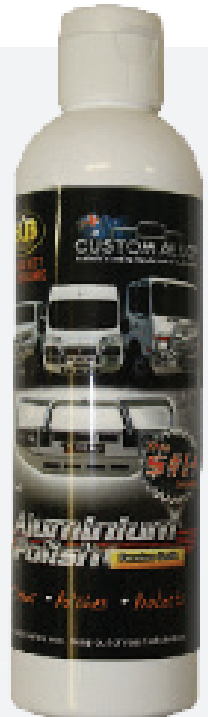
Powdercoated Products

Our powdercoated finishes are very low maintenance. Infact there is actually very little you will ever need to do for this product. Just clean it as you would your car and it will stay looking good as new.

ECB Aluminium Polish

When you're looking for that showroom finish look for your polished automotive products, you can depend on the no compromise quality of East Coast Bullbars Aluminium Polish. This specifically designed product is the best polish available and we guarantee that this \$#!+ works. With over 40 years of manufacturing polished alloy products we have trialed a large range of different polishes on the market and believe without a doubt that nothing beats the finish quality of East Coast Bullbars Aluminium Polish.

East Coast Bullbars Aluminium Polish is excellent for use by hand and is ideal for polished bullbars, nudge bar and stainless steel products. This polish will clean, polish and protect your product from the elements whilst bringing your products back to that showroom finish look.



P2FU0046TSYF

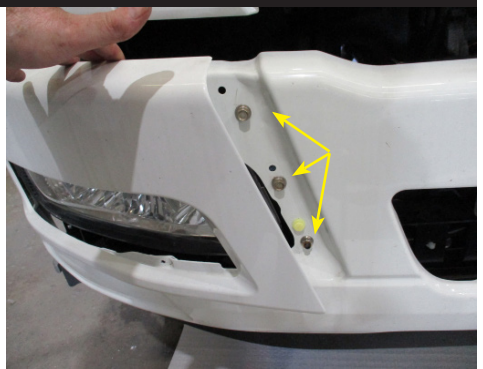
Stage 1

- Test drive vehicle to ensure all driver assists are correctly working and to gauge effectiveness. Park on a flat level surface.
- Apply parking brake and lift bonnet.
- Unwrap ECB Protection bar and disconnect mounts. Discard bolts.
- Ensure these instructions are left with the vehicle owner and/or operator.



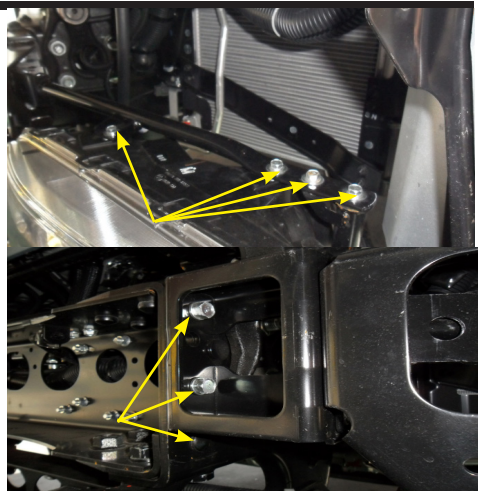
Stage 2

- Gently pull plastic cover away from head lights on bumper. Remove two (2) 12mm head bolts and one (1) 12mm mm nut per side.
- Remove bumper.



Stage 3

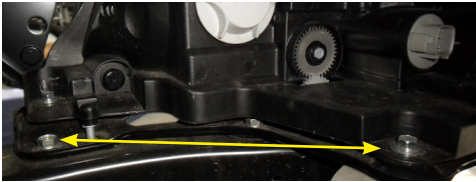
- Remove head light support bracket, four (4) 10mm head bolts (Per side). Retain bolts for refitment.
- Remove two (2) 14mm head bolts and one (1) nut from support bracket and chassis rail. (Per side).
- Remove support bracket .



FUSO FM/FN 2020 on

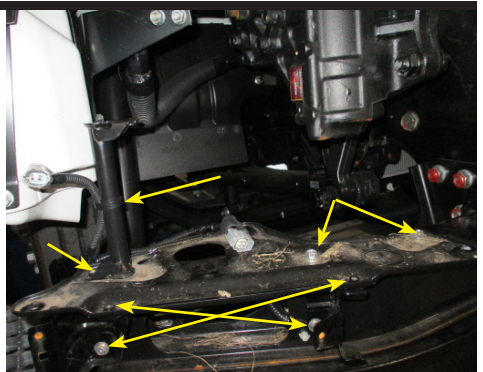
Stage 4

- Remove head light, three (3) M10 head bolts one each side of light and one at rear.
- Disconnect wiring harness at rear of light.
- Remove light.



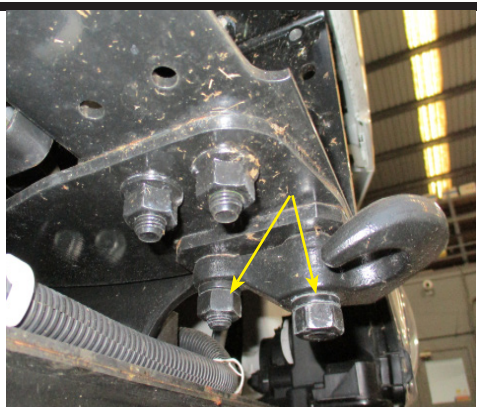
Stage 5

- Remove bottom headlight bracket from reinforcement, two (2) 12mm head bolts on top and four (4) 10mm head bolts at front. One (1) 10mm head bolt under pole.
- Release harness from pole and remove bracket, from each side.



Stage 6

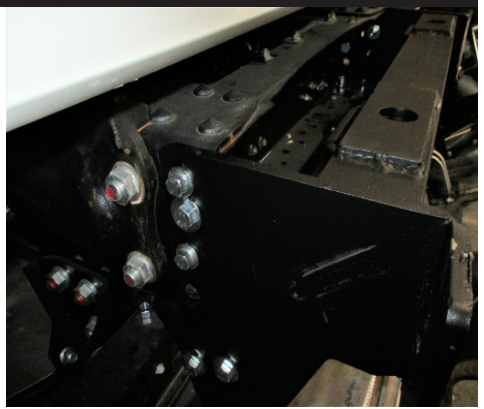
- From drivers side chassis rail, remove two(2) outer 22mm head bolts (per side).
- On passenger side remove tow hook .



Fuso FM/FN 2020 on

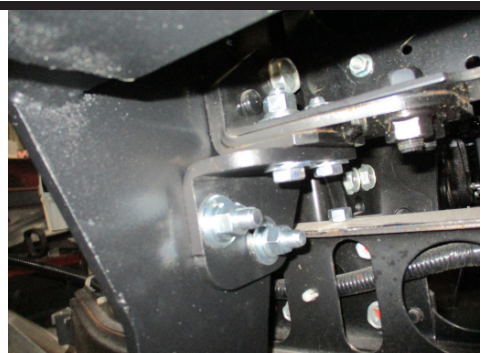
Stage 7

- Fit steel mount to chassis rail, two (2) M10 x 1.25 x 40mm bolts, flat washer and spring washer, into captive nuts (per side).
- Between 10mm head bolts, install one (1) M12 x 1.75 x 40mm bolt, flat washer and nyloc nut (per side).
- Align steel mount and tighten all bolts.



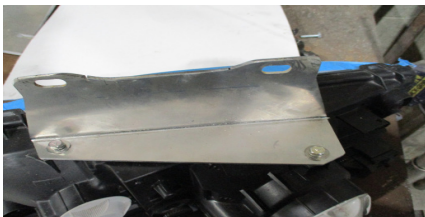
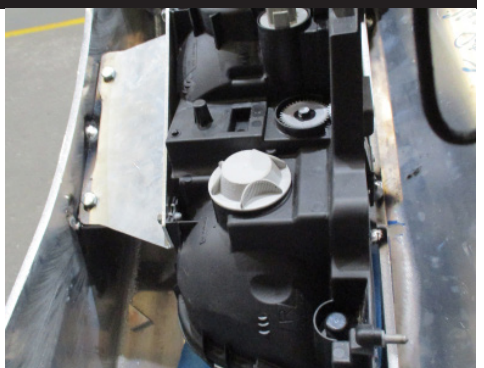
Stage 8

- Fit angle brackets under each side of the chassis rail using M12 x 1.75 x 50mm bolts, flat washers and nyloc nuts into chassis rail and M12 x 1.75 x 40 bolts, flat washers and nyloc nuts from steel mount to angle bracket.
- Tighten all bolts.



Stage 9

- Fit upper support bracket to light, use original equipment 10mm head bolts to top of light.
- Fit headlights to protection bar using M8 x 1.5 x 25mm bolts, flat washers and nyloc nuts, in top and bottom brackets.
- Align headlights and tighten all bolts.



FUSO FM/FN 2020 on

Stage 10

- Splice ECB wiring harness into wiring harness behind headlight using cable locks (supplied). Ensure wiring is free of any sharp edges and moving parts.



Stage 11

- Fit protection bar to steel mounting bracket using 3/4" eyebolts and flat washers, do not tighten at this stage.



Stage 12

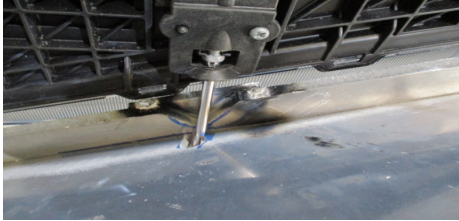
- Align pivot point holes in the bullbar mount on each side and fasten using M14 x 60mm bolts, flat washers and M14 nyloc nuts.
- Tighten bolts on protection bar so they just touch the alloy mounts.
- **DONT OVER TIGHTEN BOLTS.**
- **NOTE:** There are a separate set of nyloc nuts in the fitting kit. It is recommended to use new nyloc nuts upon installation of the Protection Bar.



FUSO FM/FN 2020 on

Stage 13

- Connect light harness and indicator/park light.
- Light adjustment can be done through slot in front of protection bar.



Stage 14

- Fit tow pins with nylon washers (supplied).



Stage 15

- Place bullbar tilt warning sticker to passenger side rear of the cab below the tilt cab operation placard, adjacent to the tilt lever.



P2FU0046TSYF

Stage 16

- Test lights and indicator/park lights for correct operation. Align lights for correct operation. Ensure all Protection bar bolts are tight.

Final Checks

Ensure Number Plate is Clearly Visible

Note: When fitting/refitting the licence plate to the vehicle, ensure there is no obstruction to licence plate vision in accordance with local authorities. If required relocate licence plate to an alternate location.

Further VFPS Notes

1. Do not attach VFPS to the vehicle using anchorages not intended for this purpose (e.g. engine mounting bolts).
2. Do not use this product for any vehicle make or model, other than those specified by the VFPS manufacturer.
3. Do not remove the plaque or label from the VFPS.
4. Do not modify the structure of the VFPS in any way.
5. No accessory or fitment should project forward of the VFPS forward profile.
6. **Ensure these instructions are left with the vehicle owner and/or operator.**

Important Information

Periodically check bolts and nuts for correct tightness, especially if traveling on rough roads.

Installation Kit

Fitting Kit

1 - Steel Mount	8 - M12 x 1.75 Nyloc Nuts
1 - Pair Steel Support Brackets	4 - M10 x 1.25 x 40mm Bolts
1 - Pair 3mm Alloy Light Brackets	4 - M10 Flat Washers
2 - 260mm Tow Pins	4 - M10 Spring Washers
2 - M33 x 60 x 5mm Nylon Washer	8 - M8 x 1.5 x 25mm Bolts
2 - Eye Bolts	16 - M8 Flat Washers
2 - 3/4 UNC ZP Flat Washers	8 - M8 x 1.5 Nyloc Nuts
2 - M14 x 60mm Bolts	2 - Narva Indicators/park lights
4 - M14 Flat Washers	2 - Custom Alloy indicator patch harness
2 - M14 Nyloc Nuts	6 - Scotch Locks
6 - M12 x 1.75 x 50mm Bolts	4 - 200mm Zip Ties
4 - M12 x 1.75 x 40mm Bolts	1 - Bullbar Tilt Warning Sticker
18 - M12 Flat Washers	

Finished Product



Warranty Registration

Contact Details

Name: _____

Address: _____

Product: **B3FU0046TSYF** _____

Email: _____

Phone: _____

Work Order Number: _____

You can find this on the silver label
of your ECB product.

By submitting this registration you automatically subscribe to ECB's mail outs. You
can unsubscribe at any time.

Register Online

For online registration please go online to www.ecb.com.au/warranty-registration.
If you have any questions please contact our national office on 1800 069 145 or
www.ecb.com.au.

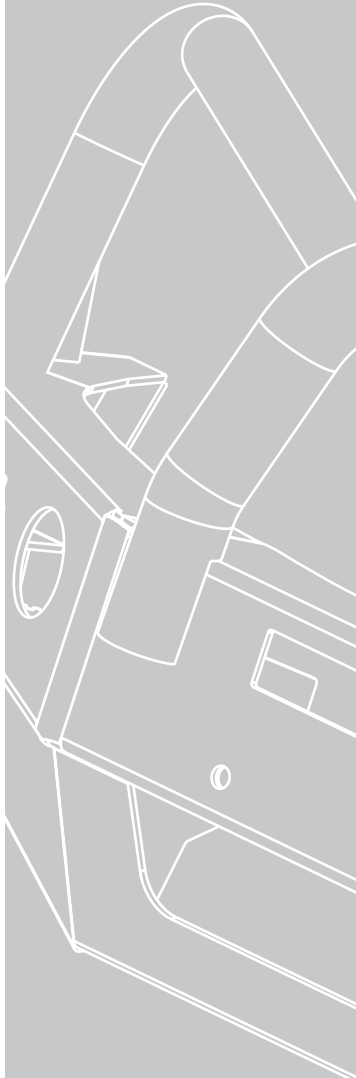
Or Post To

PO Box 122 Margate QLD 4019



PN: B3FU0046TSYF
Please post to: PO Box 122,
Margate QLD 4019

REPLACES: N/A
REVISED: 01.08.22



1800 069 145
www.ecb.com.au

Strongest Built Australian Made Lifetime Warranty

29 Snook St, Clontarf QLD 4019
PO Box 122, Margate QLD 4019